



GLOBAL SOLUTIONS



NEWS RELEASE

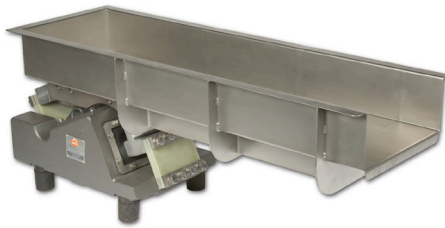
For Immediate Release

News for the Aggregate, Ceramics, Coal Processing, Food Processing, Glass, Metalworking, Minerals Processing, Packaging, Pharmaceutical, Plastics and Rubber and Recycling Industries

Contact: Ed Stevens, Stevens Strategic Communications
estevens@stevensstrategic.com

Keith Jones, Eriez
kjones@eriez.com

Eriez® Now Offers 5-Day Express Delivery on 32 Feeder Models



Erie, PA--- Eriez® is now offering five-day express delivery on 32 electromagnetic vibratory feeder models for customers with approved credit. [Feeders Fast](#), an exciting part of the *EriezXpress* 5-Day program, is a service created to offer customers shipment of a wide assortment of Eriez feeder models within five days from the time they place their order.

With available tray sizes beginning at five inches wide and ranging all the way up to 16 inches and capacities as high as 22 tons (20 mt) per hour, the 32 *Feeders Fast* feeder models can fulfill virtually any need, either large or small.

The following model lines are available through the *Feeders Fast* program:

- **Model A:** The smallest feeders in the Eriez family, these economical feeders will give precise feeding for the minutest amounts of materials. These are ideal for feeding a regulated amount of granular to small lump material from a hopper to a second process, in small packaging operations or laboratory use. These feeders control material flow from a few pounds per minute to 2 tons per hour.
- **Model C:** These feeders are used for capacities or tray sizes larger than the Model A Feeders can handle. These units utilize the same drive that provides the best linearity in the industry.
- **Model HS:** AC operated Hi-Speed Feeders have been designed for exceptionally high speed feeding of light, bulky materials. They provide greater economy and efficiency in feeding, filling, etc., and are ideal for use in conjunction with many weigh scale and packaging machines.
- **Model HD:** These “High Deflection” Vibratory Feeders handle powders and leafy products that normally could not be fed successfully in an electromagnetic feeder. Feed rates of up to 80 feet per minute (24m/min) are possible for some products.

For more information about the *Feeders Fast* program, visit: <http://en-us.eriez.com/Products/EriezXpress/FeedersFast/>.

-More-

Eriez is recognized as world authority in advanced technology for magnetic, vibratory and inspection applications. The company's magnetic lift and separation, metal detection, x-ray, materials feeding, screening, conveying and controlling equipment have application in the process, metalworking, packaging, recycling, mining, aggregate and textile industries. Eriez manufactures and markets these products through 12 international facilities located on six continents. For more information, call toll-free (888) 300-ERIEZ (3743) within the U.S. and Canada. For online users, visit www.eriez.com or send e-mail to eriez@eriez.com. Eriez World Headquarters is located at 2200 Asbury Road, Erie, PA 16506.

###